

# DISABLING REMOTE DESKTOP IN WINDOWS

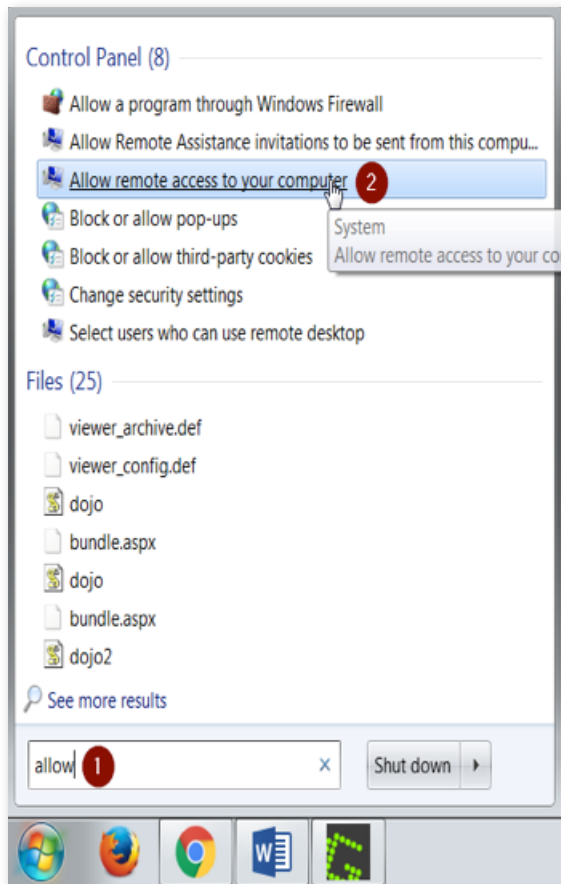


FIGURE A

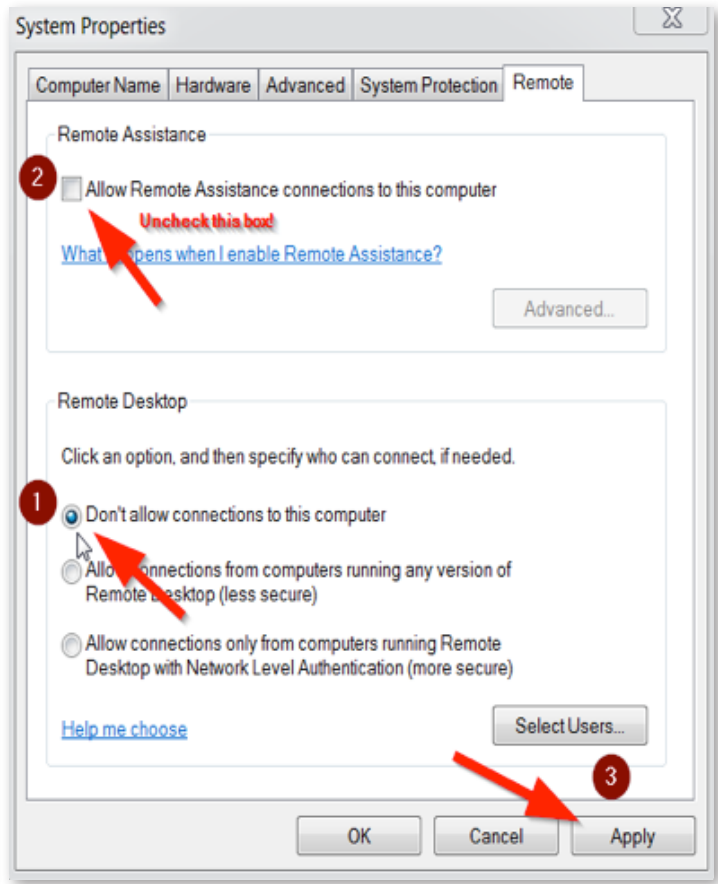


FIGURE B

1. Click the windows start button, & type the word "allow" in the search box as seen in figure A. Select "Allow remote access to your computer". It will then open up the window seen in Figure B. Uncheck the box that says "Allow Remote Assistance connections to this computer" at the top. Select "Don't allow connections to this computer" at the bottom. Click Apply. You're done.