

ENABLING SYSTEM RESTORE IN WINDOWS

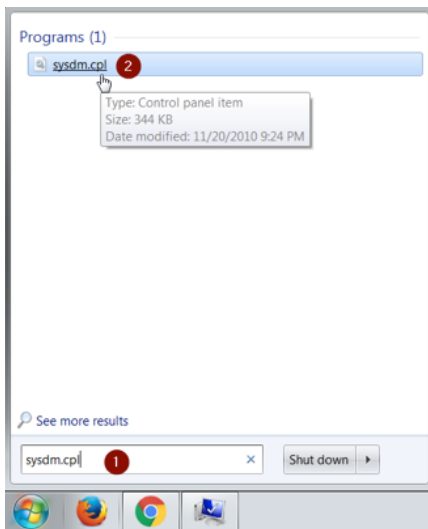


FIGURE A

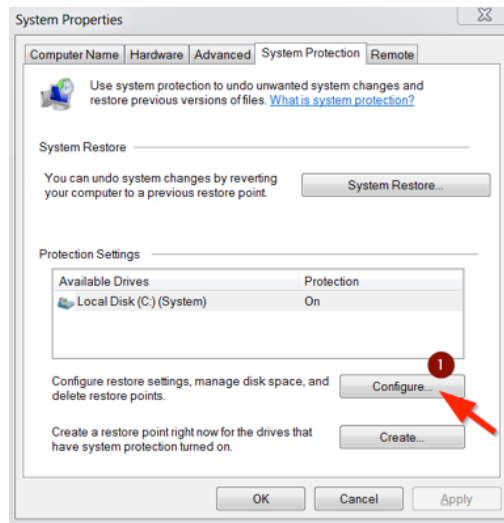


FIGURE B

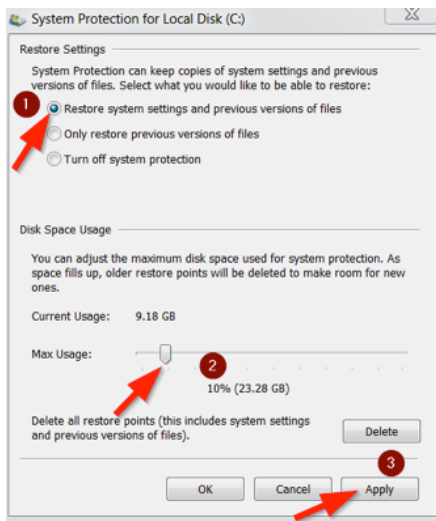


FIGURE C

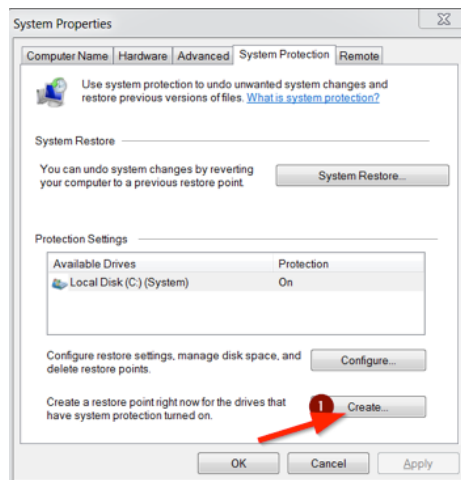


FIGURE D

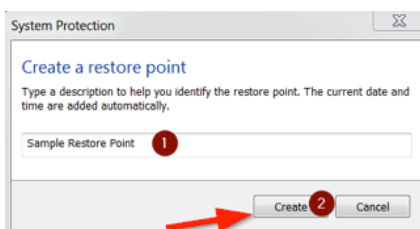


FIGURE E

1. Click the windows start button & type “Sysdm.cpl”, click the only option that populates as seen in Figure A. Click “Configure”, as seen in Figure B. Select “Restore system settings & previous versions of files” at the top. Use the slider bar & increase the max usage to 10% or higher. (The higher you go the more space it eats on your hard drive). Then click apply, as seen in Figure C. To create a restore point go back to the screen you saw in Figure B, This type click “create”. (See Figure D for this example). Create a name for your restore point, then click Create, as seen in Figure E. You’re done!